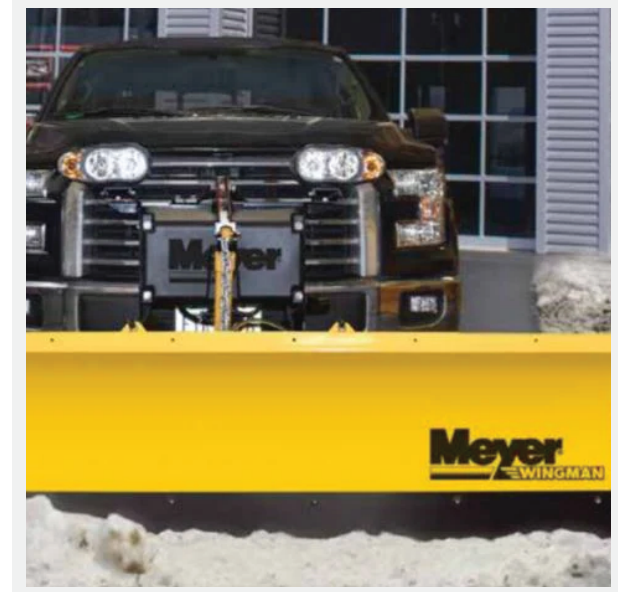


Meyer 28310 WingMan 7' 6" Snow Plow Assembly

Buyers Part Number: 28310

WINGMAN 1/2 Ton or Light Duty Trucks and full size SUV 7ft 6in Steel blade, 400lbs

- **Easy On/Off:** Goes on or off your vehicle in under a minute with the Quick-Link mounting system.
- **Easy to Install:** Plow comes fully assembled and ships with a two-inch receiver hitch.
- **Easy to Use:** A pistol grip controller gives in-cab control of the up/down and right/left motion of the blade. Integrated caster wheels make it easy to maneuver and store the moldboard. Crank stand allows easy adjustment of the plow for no-hassle attach/detach.
- **Easy to Save:** Engineered using lightweight military-grade steel. Lighter weight means less wear and tear on your vehicle plus better fuel efficiency.
- **Easy to Trust:** Designed for maximum durability. Powered by a commercial-grade hydraulic system. Protected from corrosion by Dura-Slick paint with Teflon®. Backed with an industry leading 5-year warranty.



Specifications

| | | | |
|-------------------------|---------------------|-------------------|-----------------|
| Blade Model # | 28310 7' 6" Wingman | Blade Type | Full-Trip Steel |
| Moldboard Gauge | 14 | Vertical Ribs | 8 |
| Avg Width at Full Angle | 80" | Plow Trip Springs | 2 |

Specifications continued

| | | | |
|------------------|-------|-----------------|-----------|
| Moldboard Length | 7' 6" | Cutting Edge | 3/8" x 6" |
| Moldboard Height | 26" | Weight Complete | 400lbs |

WHERE TO BUY